

McNamara Suite



Room sizes:

59ft / 18m x 82ft / 25m

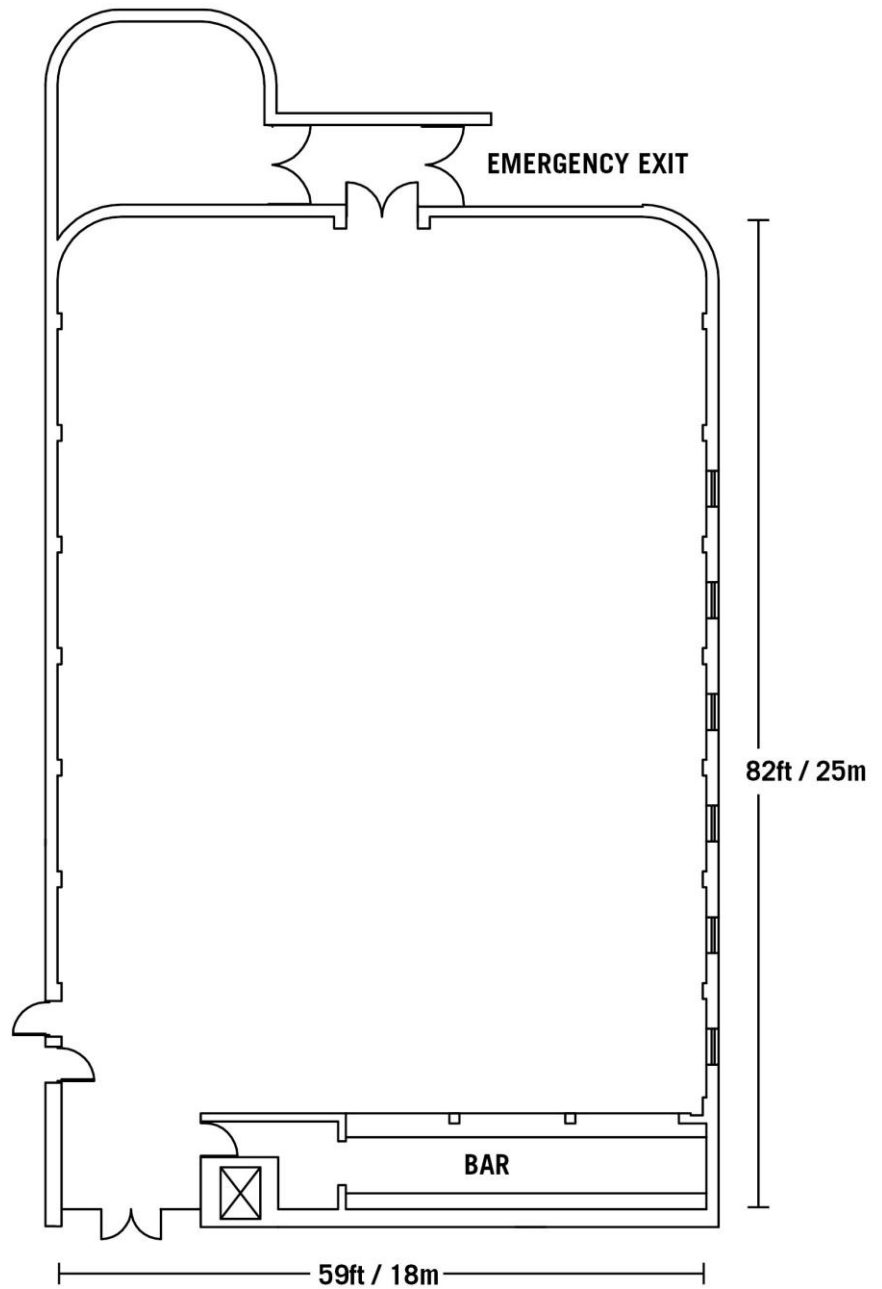
Ceiling Height:

13ft / 4m

Other information:

- Integrated AV system
- Large screen
- Projector
- Wi-Fi
- Air con/ Heating
- Integrated bar
- Dance floor
- Mobile stage
- Natural daylight
- Clear sight lines
- Disabled access
- Loading bay area

EXIT / ENTRANCE
EMERGENCY EXIT



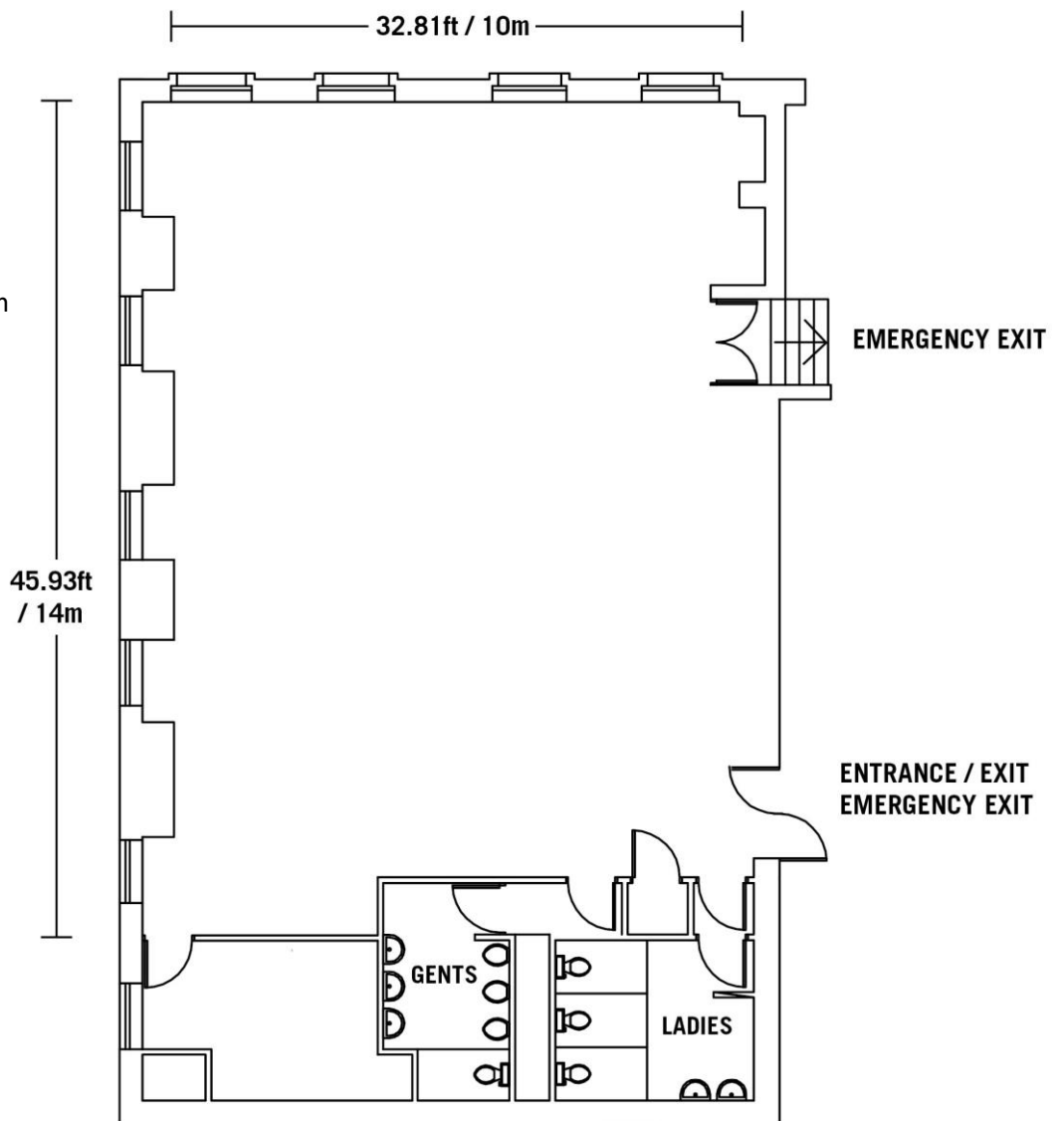
Version 1. February 7th, 2013

Presidential Suite



Room sizes:
32.8ft / 10m
x 46.93ft / 14m

Other information:
Integrated AV system
Screen
Projector
Wi-Fi
Air conditioning
Heating
Ladies toilets
Men's toilets
Wooden floor
Natural daylight
Clear sight lines
Disabled access



Version 1. February 7th, 2013

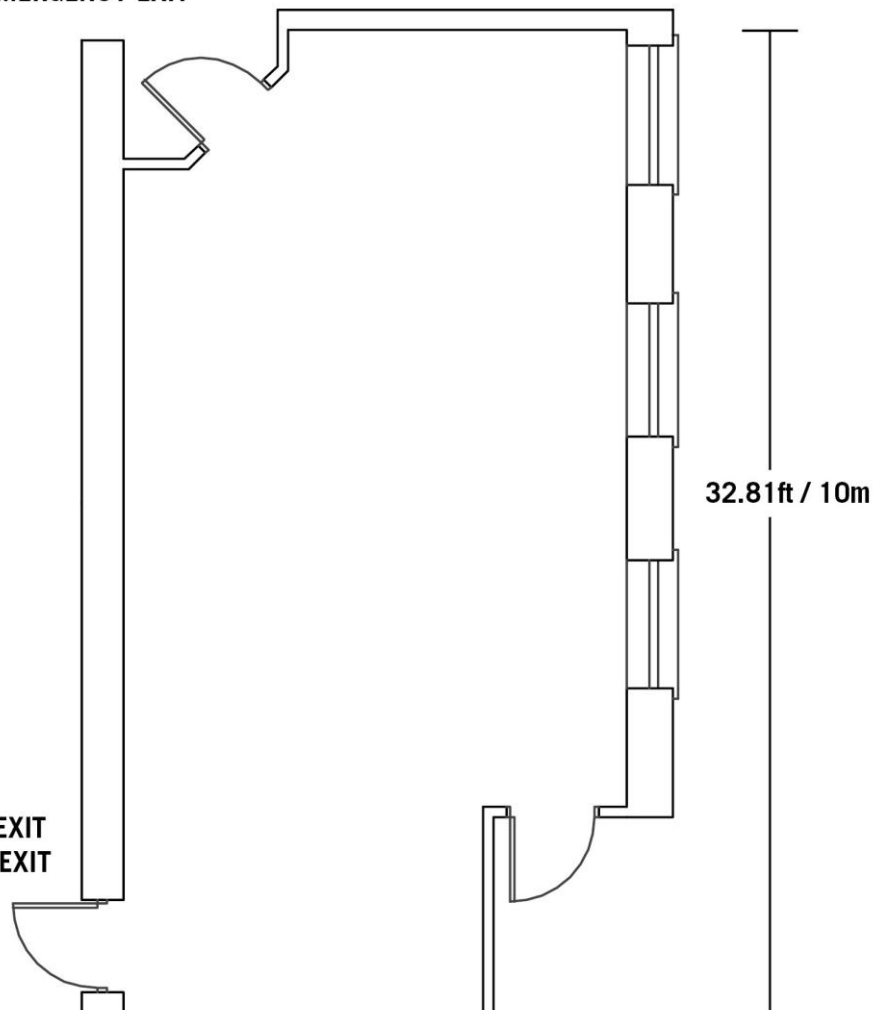
Tom Bugler Suite



ENTRANCE / EXIT EMERGENCY EXIT

Room sizes:
16.4ft / 5m x 32.81ft / 10m

- Other information:**
- Integrated AV system
 - Screen
 - Projector
 - Wi-Fi
 - Air conditioning
 - Heating
 - Wooden floor
 - Natural daylight
 - Clear sight lines
 - Disabled access



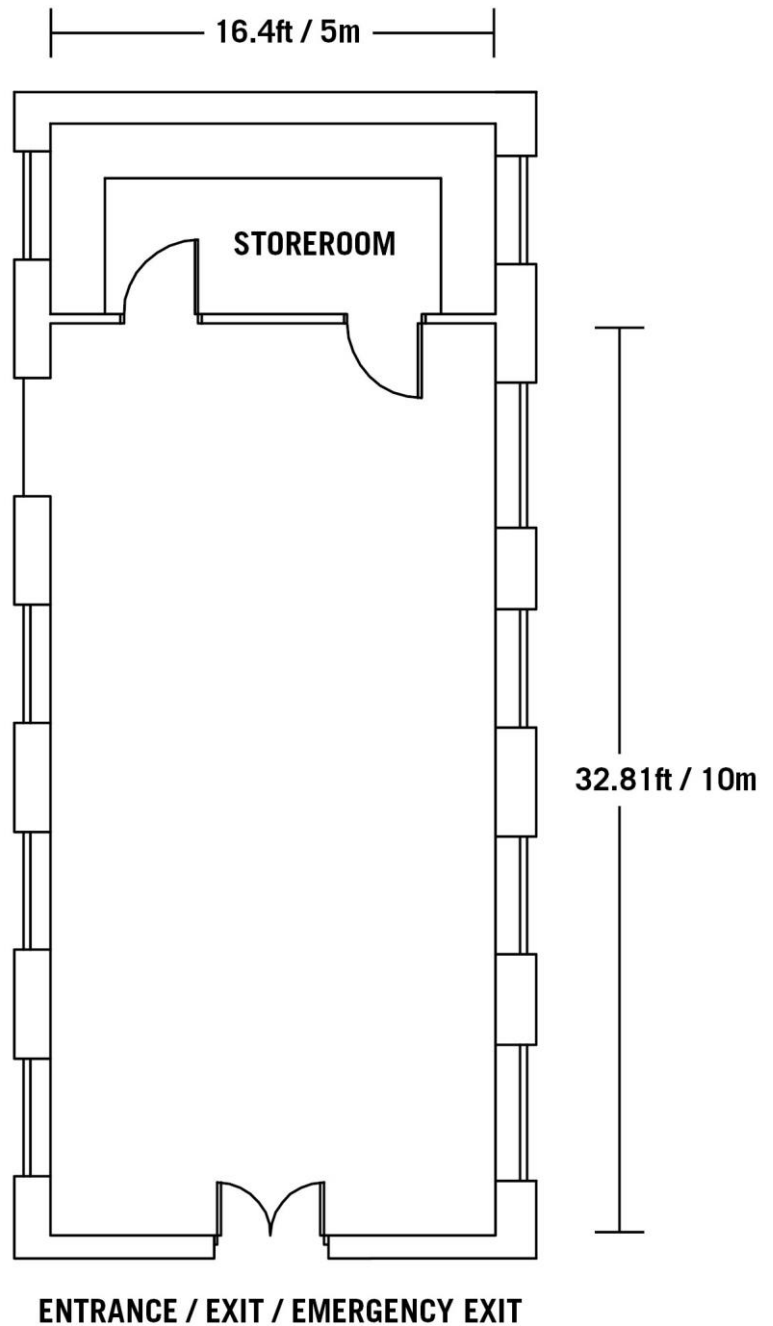
Version 1. February 7th, 2013

Old Chapel



Room sizes:
16.4ft / 5m x 32.81ft / 10m

Other information:
Integrated AV system
Screen
Projector
Wi-Fi
Air conditioning
Heating
Parquet floor
Vaulted ceiling
Natural daylight
Clear sight lines



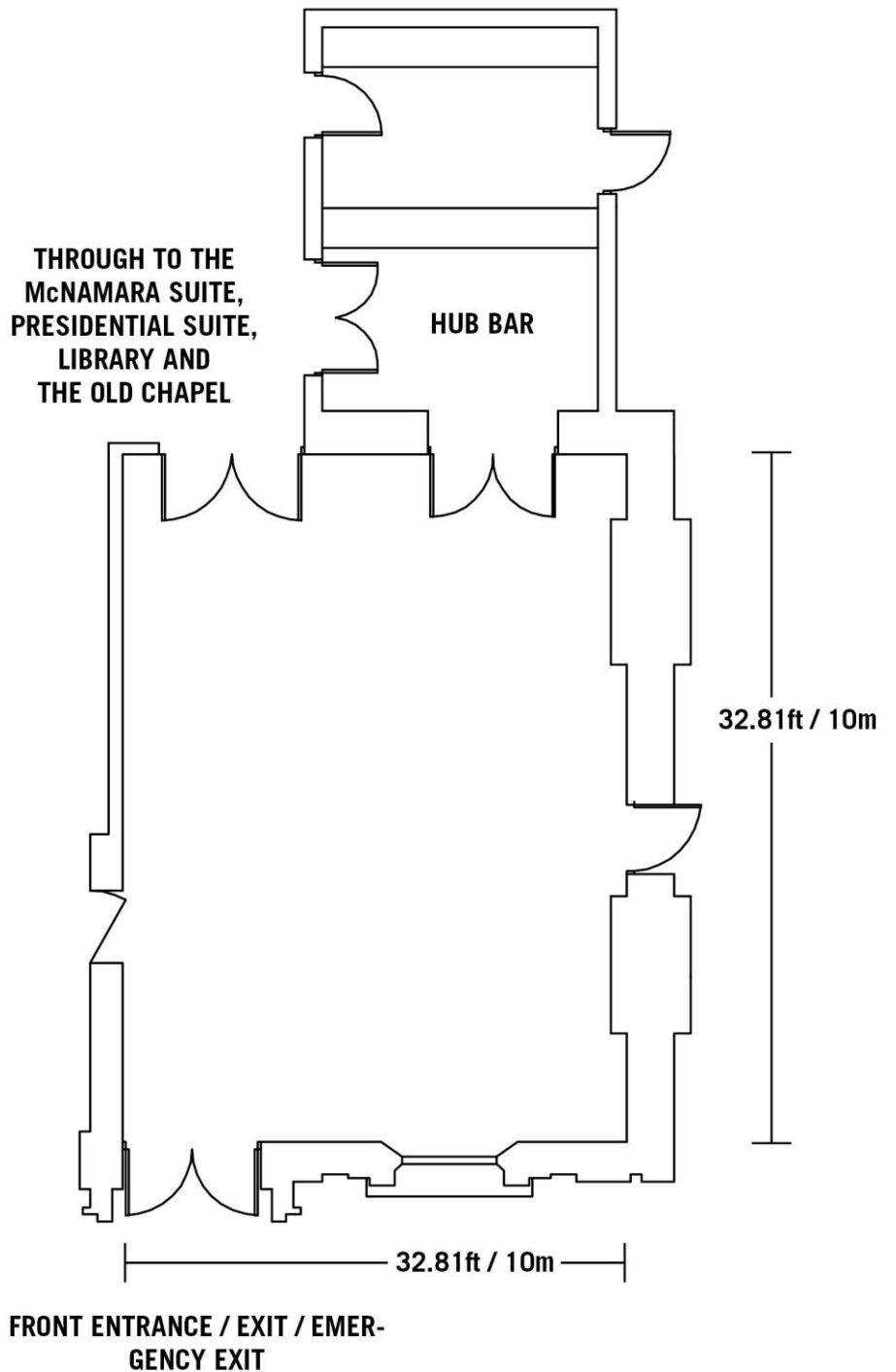
Version 1. February 7th, 2013

Hub



Room sizes:
32.81ft / 10m
x 32.81ft / 10m

Other information:
Integrated bar
Wi-Fi
Air conditioning
Heating
Wooden floor
Natural daylight
Clear sight lines
Disabled access



Version 1. February 7th, 2013